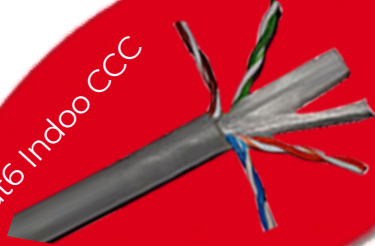




SPECTILLA
EXPORTS

CONTINUAL IMPROVEMENT

Cat6 Indoob CCC



SPECTILLA

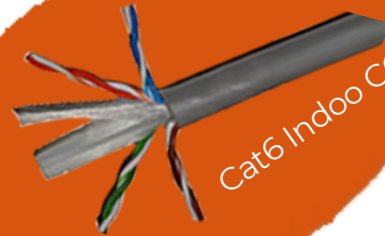
Cat6 outdoo CCC

Product
Catalogue

Cat6 outdoo CCA

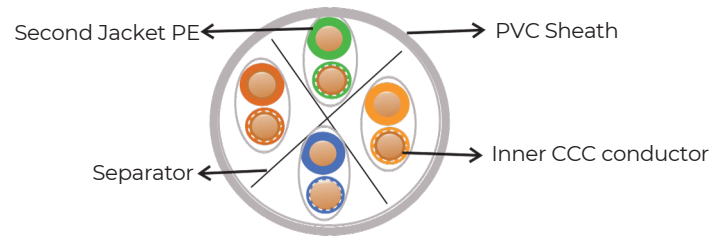
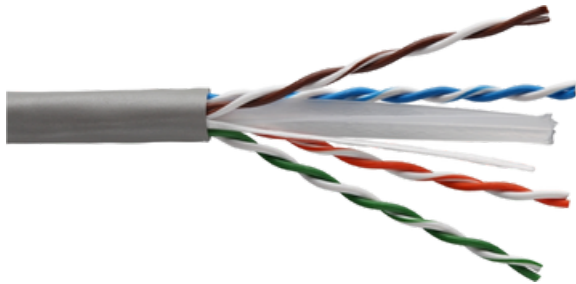


Cat6 Indoob CCA





CAT6 Indoor Networking Cable



CAT6 Designed of cable

CABLE CONSTRUCTION :

- High Grade 0.51mm Cable (inner core)
- 24AWG (American Wire Gauge)
- Colour: Gray
- Cat6 UTP, UTP 500MHz Ethernet Cable
- Gigabit Ready 1GBASE-T
- CC: Copper Clad Copper , with plastic separator
- Inner layer for extra protection
- 4 unshielded twisted pairs (8 wires per cable)
- 8 insulated wires formed into 4 pairs. Each pair is individually screened with
- Outer diameter: 5.98mm
- Cable Roll, Solid Cable

Electrical Parameters

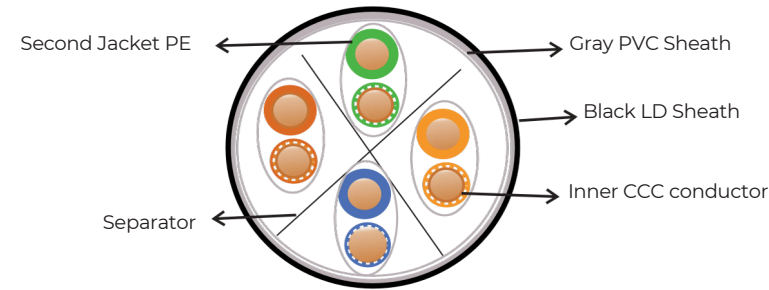
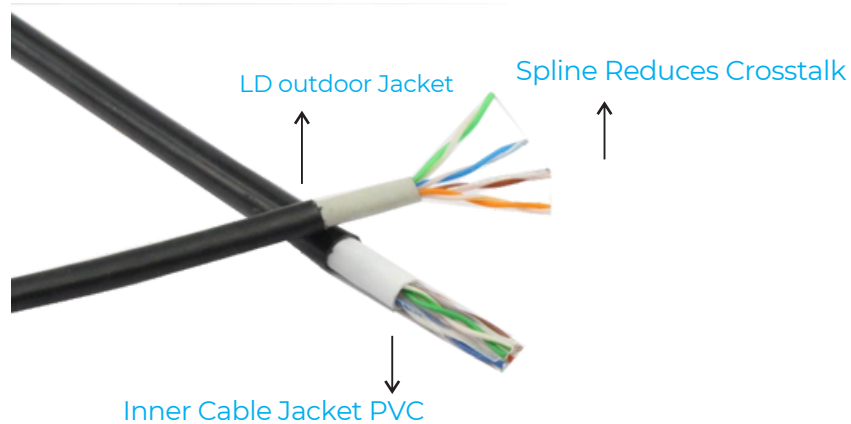
- Conductor Resistance Existence (DC): 9.38Ω ohms /100mtr@20° C. MAX.
- Resistance Unbalance : 5 %MAX
- Mutual Capacitance : 5.6 n F / 100 mtrs MAX.
- Capacitance Unbalance Pair/round 330pF/100M MAX
- Delay Skew ≤ 45 nS/100M
- Normal Velocity of Propagation : 69%
- Impedance : $100 \pm 15\% \Omega$

Designed of cable

- Inner conductor : Single Bare Copper (0.510 mm ± 0.005 mm)
- Insulation Dia : 1.02mm ± 0.05 mm
- Core colour : White-Blue; White-Orange; White-Green & White-Brown
- Jacket Material : PVC
- Wall thickness : 0.8mm
- Second Jacket : PE
- Colour : Grey
- Size : 6.0mm ± 0.2 mm



CAT6 Outdoor Cable



Electrical Parameters

- Conductor Resistance Existence (DC): 9.38Ω ohms /100mtr@20° C. MAX.
- Resistance Unbalance : 5 %MAX
- Mutual Capacitance : 5.6 nF/100 mtrs MAX.
- Capacitance Unbalance Pair/round 330pF/100M MAX
- Delay Skew ≤ 45 nS/100M
- Normal Velocity of Propagation : 69%
- Impenance : $100 \pm 15\% \Omega$

Designed of cable

- Inner conductor : Single Bare Copper ($0.51\text{mm} \pm 0.005\text{mm}$)
- Insulation : HDPE
- Insulation Dia : $1.02\text{mm} \pm 0.05\text{mm}$
- Core colour : White-Blue; White-Orange; White-Green & White-Brown
- Jacket Material : PVC /LD
- Wall thickness : 0.8mm
- Second Jacket : PE
- Colour : Grey
- Size : $7.0\text{mm} \pm 0.2\text{mm}$

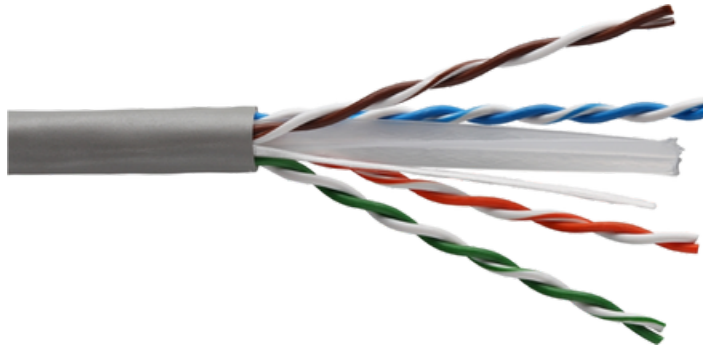
CAT6 Outdoor Designed of cable

Features :

- Outdoor Cable with water und UV resistant sheath - can be used outdoor and indoor
- High Grade 0.51mm Cable (inner core)
- 24AWG (American Wire Gauge)
- Colour: Gray inner /Black outer
- Cat6 UTP, UTP 250MHz Ethernet Cable
- Gigabit Ready
- CC: Copper Clad Copper , with plastic separator
- Inner layer for extra protection
- 4 unshielded twisted pairs (8 wires per cable)
- Outer diameter: 7.0mm
- Cable Roll, Solid Cable



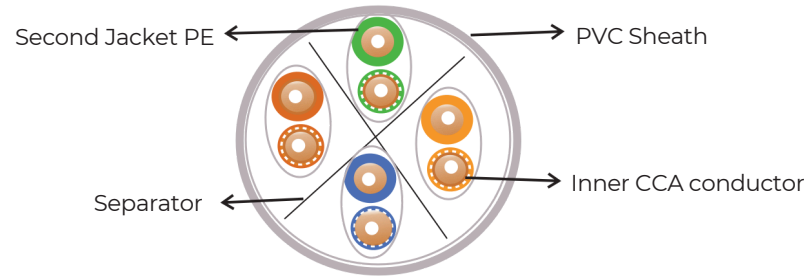
CAT6 Indoor Networking Cable



CAT6 Designed of cable

CABLE CONSTRUCTION :

- High Grade 0.51mm Cable (inner core)
- 24AWG (American Wire Gauge)
- Colour: Gray
- Cat6 UTP, UTP 500MHz Ethernet Cable
- Gigabit Ready 1GBASE-T
- CC: Copper Clad Aluminium , with plastic separator
- Inner layer for extra protection
- 4 unshielded twisted pairs (8 wires per cable)
- 8 insulated wires formed into 4 pairs. Each pair is individually screened with
- Outer diameter: 5.98mm
- Cable Roll, Solid Cable



Electrical Parameters

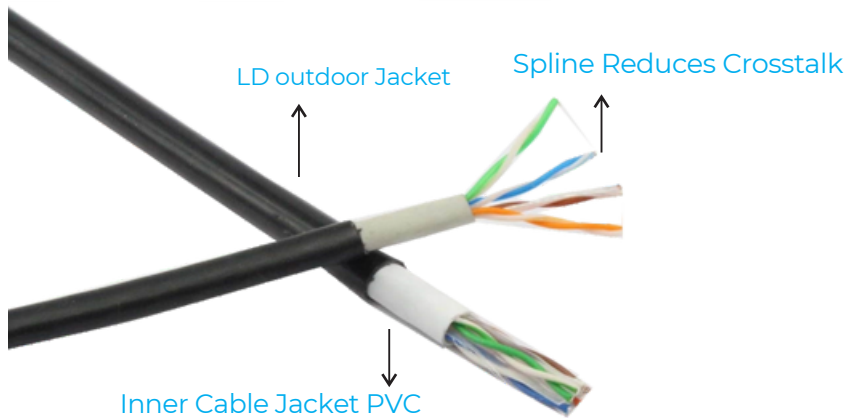
- Conductor Resistance Existence (DC): 9.38Ω ohms /100mtr@20 ° C. MAX.
- Resistance Unbalance : 5 %MAX
- Mutual Capacitance : 5.6 n F / 100 mtrs MAX.
- Capacitance Unbalance Pair/round 330pF/100M MAX
- Delay Skew ≤ 45 nS/100M
- Normal Velocity of Propagation : 69%
- Impedance : $100 \pm 15\% \Omega$

Designed of cable

- Inner conductor : Single CCAr (0.51mm ± 0.005 mm) • Insulation Dia : 1.02mm ± 0.05 mm • Core colour : White-Blue; White-Orange; White-Green & White-Brown • Jacket Material : PVC • Size : 6.8mm ± 0.2 mm • Wall thickness : 0.8mm • Second Jacket : PE • Colour : Grey • Size : 6.0mm ± 0.2 mm



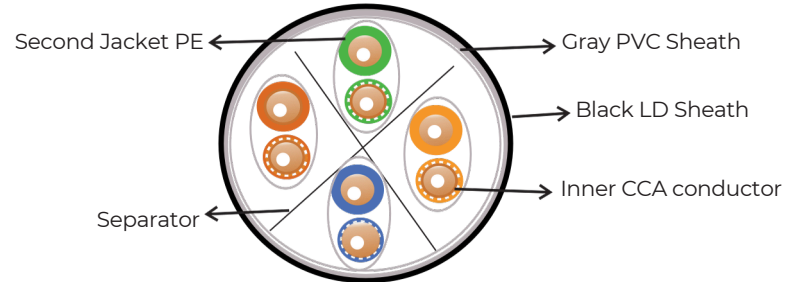
CAT6 Outdoor Cable



CAT6 Outdoor Designed of cable

Features :

- Outdoor Cable with water und UV resistant sheath - can be used outdoor and indoor
- High Grade 0.51mm Cable (inner core)
- 24AWG (American Wire Gauge)
- Colour: Gray inner /Black outer
- Cat6 UTP, UTP 250MHz Ethernet Cable
- Gigabit Ready
- CC: Copper Clad Aluminium , with plastic separator
- Inner layer for extra protection
- 4 unshielded twisted pairs (8 wires per cable)
- Outer diameter: 7.0mm
- Cable Roll, Solid Cable



Electrical Parameters

- Conductor Resistance Existence (DC): 9.38Ω ohms /100mtr@20° C. MAX.
- Resistance Unbalance : 5 %MAX
- Mutual Capacitance : 5.6 nF/100 mtrs MAX.
- Capacitance Unbalance Pair/round 330pF/100M MAX
- Delay Skew ≤ 45 nS/100M
- Normal Velocity of Propagation : 69%
- Impenance : $100 \pm 15\% \Omega$

Designed of cable

- Inner conductor : Single CCA (0.51mm ± 0.005 mm)
- Insulation : HDPE
- Insulation Dia : 1.02mm ± 0.05 mm
- Core colour : White-Blue; White-Orange; White-Green & White-Brown
- Jacket Material : PVC /LD
- Size : 6.8mm ± 0.2 mm
- Wall thickness : 0.8mm
- Second Jacket : PE
- Colour : Grey
- Size : 7.0mm ± 0.2 mm



Contact :-

Plot No. 65, Shreeji Estate, Near Ajanta Clock,
Morbi - Rajkot Highway, Shakt-Sanala, Morbi-363641 (Guj-India)
Mo- +917861924556 [Email- info@spectillaexports.com](mailto:info@spectillaexports.com)